

MULTI-FAMILY SUBFLOOR PROBLEMS? MEET THE SCHÖNOX FAMILY OF SUBFLOOR SOLUTIONS.



©2020 HPS. AST AP APF. SELL SHEET. 207-769

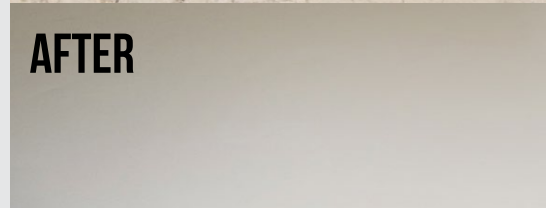
ARE YOU FACED WITH SUBFLOOR ISSUES?

Just vacuum, prime and pour Schönox AP/APF synthetic gypsum self-leveling compounds to make your old floors look like new again. Use Schönox AST, the genius synthetic gypsum rapid drying smoothing and patching compound, to achieve a true featheredge.

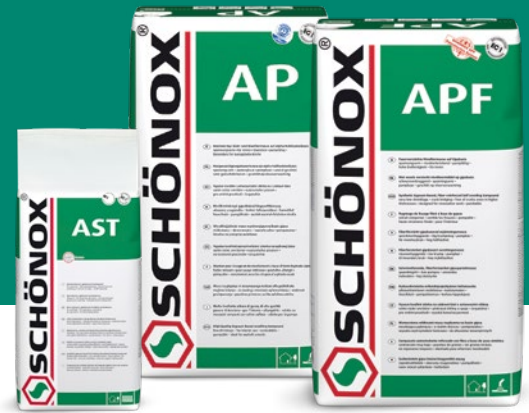
BEFORE



AFTER



THE SCHÖNOX FAMILY OF SYNTHETIC GYPSUM PRODUCTS



SCHÖNOX AST SYNTHETIC GYPSUM, RAPID-DRYING, SMOOTHING AND PATCHING COMPOUND



Schönnox AST is a rapid-drying, synthetic gypsum-based compound used to provide a very smooth, level finish on various interior substrates. It is suited for:

- Concrete, cement, gypsum, and wooden substrates
- Floor leveling compounds
- Old substrates, such as vinyl flooring
- Old water-resistant adhesive residues

Schönnox AST can be installed as a true featheredge.

Does not contribute to mold growth

Dust Reduced

Compressive Strength: 3600 PSI

SCHÖNOX AP PUMPABLE SYNTHETIC GYPSUM SELF-LEVELING COMPOUND



Schönnox AP is a synthetic gypsum-based self-leveling compound for the smoothing and leveling of substrates under flexible coverings and wood floors with layer thicknesses of at least 1/8". Designed for interior areas, Schönnox AP is suited for:

- Gypsum, concrete, and cement based substrates
- Ceramic tile, terrazzo, and sheet vinyl
- Old water-resistant adhesive residues
- OSB board and plywood

Schönnox AP can be installed to layer thicknesses of 1/16" to 2" .

Does not contribute to mold growth

Dust Reduced

Compressive Strength: 5800 PSI

SCHÖNOX APF PUMPABLE SYNTHETIC GYPSUM, FIBER REINFORCED SELF-LEVELING COMPOUND



Schönnox APF is a fiber-reinforced, synthetic gypsum-based self-leveling compound for wood floors and critical interior substrates. With embedded fibers that make reinforcement fabric unnecessary, Schönnox APF can be used on:

- Timber floorboards, OSB board, and plywood
- Wood-cement boards
- Substrates such as ceramic tile, terrazzo, and sheet vinyl
- Water-resistant adhesive residues
- Concrete, cement, and gypsum substrates
- Sound insulating underlayments

Schönnox APF can be installed to layer thicknesses of 1/8" to 1" .

Does not contribute to mold growth

Dust Reduced

Compressive Strength: 6200 PSI



All Schönnox synthetic gypsum compounds are manufactured and packaged using the dust-reduced technology developed by Schönnox.



May help contribute to LEED v4 certification of projects in these categories:

- EQc2 – 3 points
Low-Emitting Materials

- MRc1 – up to 2 points Life-Cycle Impact Reduction
- MRc2 – 1 point Environmental Product Declaration
- MRc4 – 1 point Material Ingredient

- UL classified in accordance with ASTM E84(ANSI/UL 723):
Flame Spread 0; Smoke Development 0
- Environmental Product Declaration (EPD)
Declaration number: EPD-DIV-2013311-EN